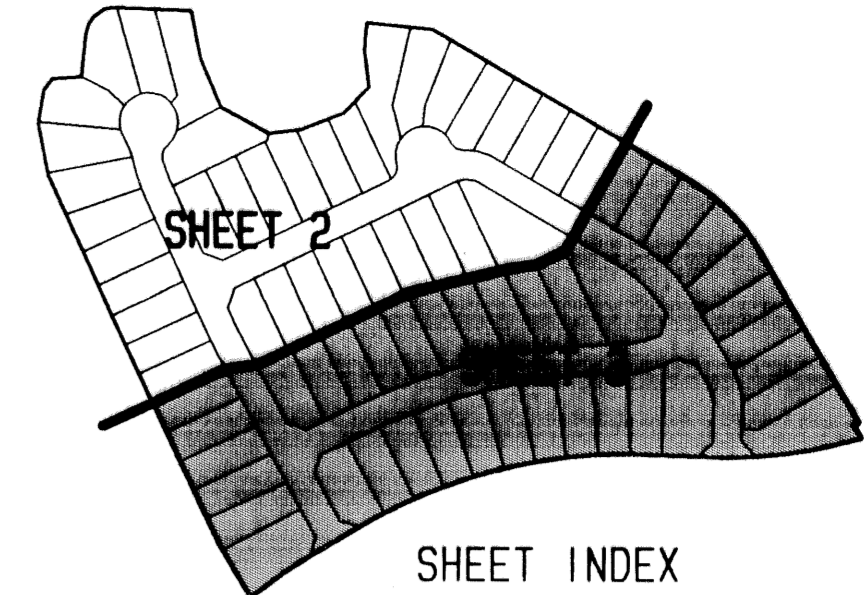


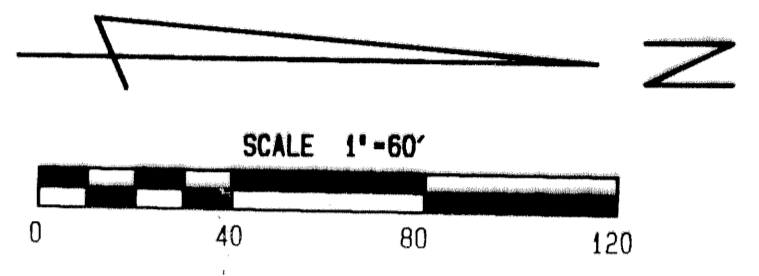
# IRONHORSE PARCEL C

BEING A REPLAT OF A PORTION OF THE GOLF COURSE AND ALL OF PARCEL "C", IRONHORSE, AS RECORDED IN PLAT BOOK 65, PAGES 191 THROUGH 206, PUBLIC RECORDS OF PALM BEACH COUNTY, FLORIDA, LYING IN SECTION 22, TOWNSHIP 42 SOUTH, RANGE 42 EAST, CITY OF WEST PALM BEACH, PALM BEACH COUNTY, FLORIDA  
 SEPTEMBER 1994  
 SHEET 3 OF 3

79

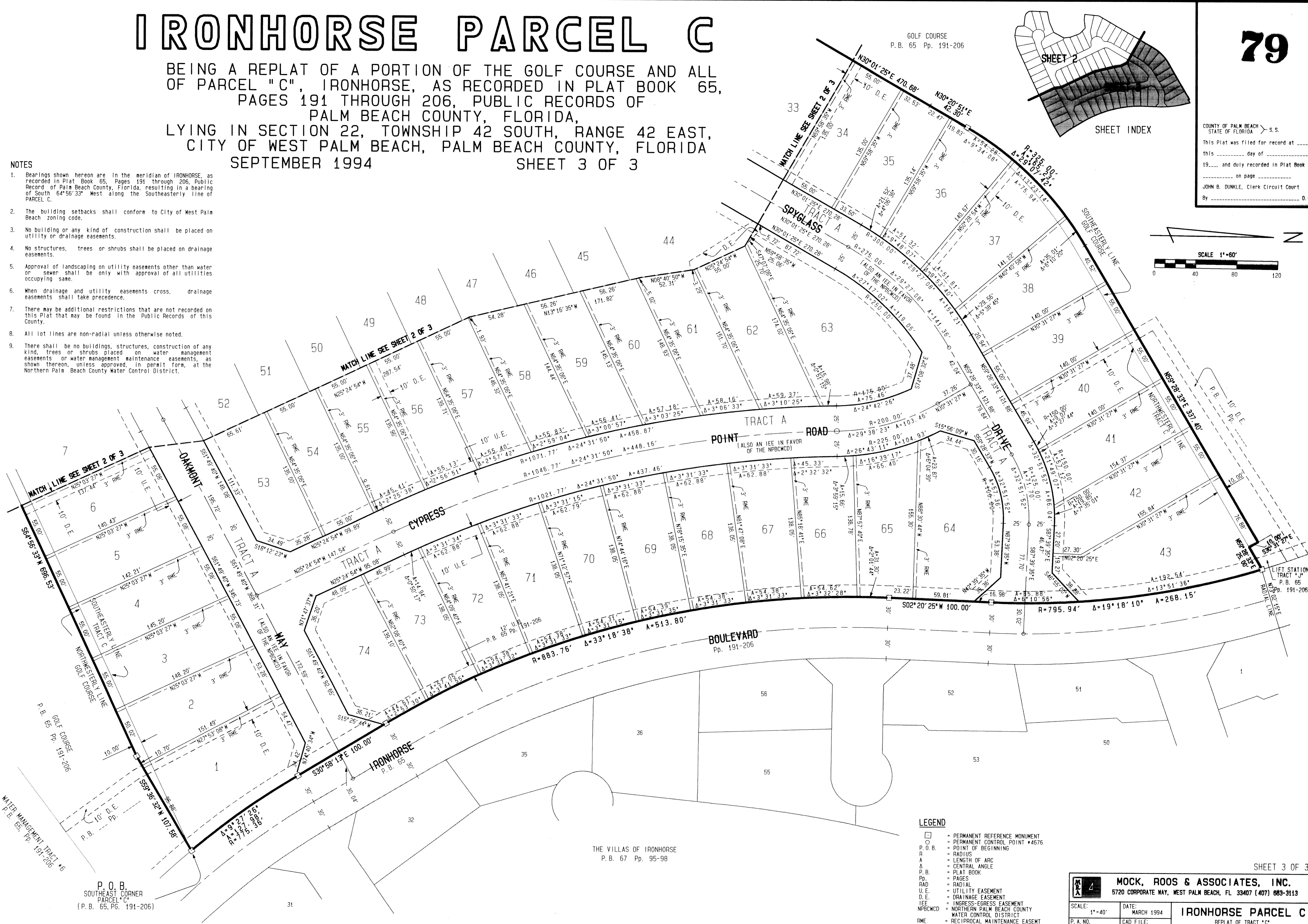


COUNTY OF PALM BEACH  
 STATE OF FLORIDA  
 This Plat was filed for record at \_\_\_\_\_ this \_\_\_\_\_ day of \_\_\_\_\_ 19\_\_\_\_, and duly recorded in Plat Book No. \_\_\_\_\_ on page \_\_\_\_\_ JOHN B. DUNKLE, Clerk Circuit Court By \_\_\_\_\_ D. C.



**NOTES**

- Bearings shown hereon are in the meridian of IRONHORSE, as recorded in Plat Book 65, Pages 191 through 206, Public Record of Palm Beach County, Florida, resulting in a bearing of South 64°56'33" West along the Southeasterly line of PARCEL C.
- The building setbacks shall conform to City of West Palm Beach zoning code.
- No building or any kind of construction shall be placed on utility or drainage easements.
- No structures, trees or shrubs shall be placed on drainage easements.
- Approval of landscaping on utility easements other than water or sewer shall be only with approval of all utilities occupying same.
- When drainage and utility easements cross, drainage easements shall take precedence.
- There may be additional restrictions that are not recorded on this Plat that may be found in the Public Records of this County.
- All lot lines are non-radial unless otherwise noted.
- There shall be no buildings, structures, construction of any kind, trees or shrubs placed on water management easements or water management maintenance easements, as shown thereon, unless approved, in permit form, at the Northern Palm Beach County Water Control District.



SUBDIVISION Ironhorse Parcel  
 BOOK 74 PAGE 79 FLOOR MAP  
 FLOOR SCHE ZONING  
 QUAD # SE  
 PUD NAME C/WPB  
 ZIP CODE

- LEGEND**
- = PERMANENT REFERENCE MONUMENT
  - = PERMANENT CONTROL POINT #4676
  - P. O. B. = POINT OF BEGINNING
  - R = RADIUS
  - A = LENGTH OF ARC
  - ∠ = CENTRAL ANGLE
  - P. B. = PLAT BOOK
  - P. P. = PAGES
  - RAD = RADIAL
  - U. E. = UTILITY EASEMENT
  - D. E. = DRAINAGE EASEMENT
  - IEE = INGRESS-EGRESS EASEMENT
  - NPBCWD = NORTHERN PALM BEACH COUNTY WATER CONTROL DISTRICT
  - RME = RECIPROCAL MAINTENANCE EASEMENT

**MOCK, ROOS & ASSOCIATES, INC.**  
 5720 CORPORATE WAY, WEST PALM BEACH, FL 33407 (407) 683-3113

SCALE: 1" = 40' DATE: MARCH 1994  
 P. A. NO. 93188.00 CAD FILE: IRONRPO2 SECTION 22: TOWNSHIP 42 SOUTH, RANGE 42 EAST

**IRONHORSE PARCEL C**  
 REPLAT OF TRACT "C"  
 SHEET 3 OF 3

P. O. B.  
 SOUTHEAST CORNER  
 PARCEL "C"  
 (P. B. 65, PG. 191-206)

THE VILLAS OF IRONHORSE  
 P. B. 67 Pp. 95-98

WATER MANAGEMENT TRACT "A"  
 P. B. 65, Pp. 191-206

GOLF COURSE  
 P. B. 65 Pp. 191-206